

****AVAILABLE JUNE 2026** **FURNISHED****

This stylish first floor conversion apartment is ideally located on Fenwick Terrace, Jesmond. A very private location, tucked just off Collingwood Terrace and Jesmond Dene Road, the property is situated a stone's throw from Jesmond Dene and also a short walk from Central Jesmond with its shops, cafes and bars.

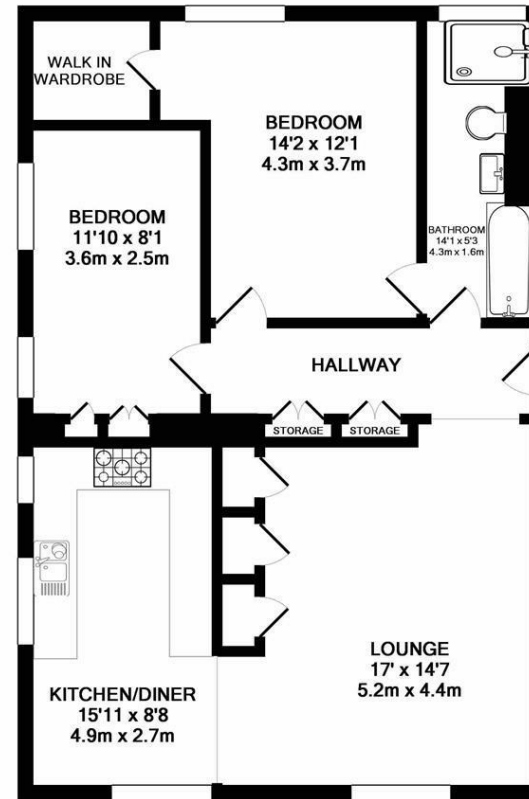


The property briefly comprises; communal entrance hall with secure entry phone system and stairs to the first floor; the apartment itself has a hallway with fitted storage space and spotlighting. There is a fabulous open plan reception with dual aspect views - boasting fitted storage space, a wall mounted TV point, dining area and a modern fitted kitchen. The kitchen has Brathnay slate floor tiles & worktops, together integrated appliances including dishwasher, washing machine, fridge & freezer, as well as a five burner gas hob. There are two bedrooms, both doubles, the master of which benefiting from a wall mounted TV, walk-in wardrobe with safe and access to 'Jack & Jill' style bathroom. Bathroom, fully tiled with three piece suit.

Available on a furnished basis, with gas central heating and on street parking.

Available 26th June 2026 | £1,250pcm | First Floor Conversion Apartment | Private Location | 809 Sq. ft (75.1 m²) | Two Double Bedrooms | Walk-In Wardrobe | Stylish 'Jack & Jill' Bathroom | Open Plan Reception With Dual Aspect | Lounge | Modern Kitchen/ Diner | Plenty Of Storage Space | GCH | Fantastic Location | On Street Parking | Council Tax Band: C | EPC Rating: D

£1,250 PCM



TOTAL APPROX. FLOOR AREA 809 SQ.FT. (75.1 SQ.M.)

Whilst every attempt has been made to ensure the accuracy of the floor plan contained here, measurements of doors, windows, rooms and any other items are approximate and no responsibility is taken for any error, omission, or mis-statement. This plan is for illustrative purposes only and should be used as such by any prospective purchaser. The services, systems and appliances shown have not been tested and no guarantee as to their operability or efficiency can be given
Made with Metropix ©2018

IMPORTANT NOTE: These particulars and the descriptions and measurements herein do not constitute representation and whilst every effort has been made to ensure accuracy, this cannot be guaranteed.

